

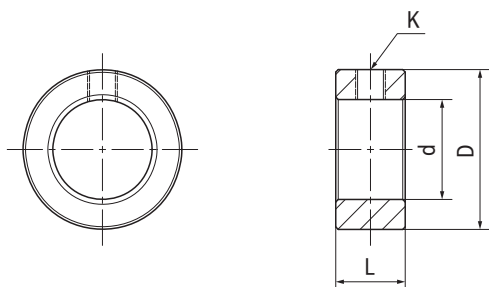
LR锁紧环 Locking rings



产品特性 Product features

- 尺寸范围: 20mm, 25mm, 30mm, 35mm, 40mm
 - 标准材料: 镀锌钢, 可选不锈钢与铝合金
 - 配合关节轴承座
 - 带锁紧螺钉
- Dimension range: 20mm, 25mm, 30mm, 35mm, 40mm
 - Standard material: Galvanized steel
available material: stainless steel and aluminum alloy
 - Used with spherical bearings
 - With locking screw

标准规格 Standard specifications



产品编码 Part No.:

LR-20-32-14-C

- C: 镀锌钢 Galvanized steel
- A: 铝合金 Aluminum alloy
- E: 不锈钢 Stainless steel
- 宽度 Width
- 外径 Outside diameter
- 内径 Inner diameter

产品编码 Part No.	d H7 [mm]	D [mm]	L [mm]	K [mm]	重量 Weight [g]
LR-20-32-14-C	20	32	14	M6	54
LR-25-40-16-C	25	40	16	M8	96
LR-30-45-16-C	30	45	16	M8	111
LR-35-56-16-C	35	56	16	M8	187
LR-40-63-18-C	40	63	18	M10	261
LR-20-32-14-E	20	32	14	M6	54
LR-25-40-16-E	25	40	16	M8	96
LR-30-45-16-E	30	45	16	M8	111
LR-35-56-16-E	35	56	16	M8	187
LR-40-63-18-E	40	63	18	M10	261

产品编码 Part No.	d H7 [mm]	D [mm]	L [mm]	K [mm]	重量 Weight [g]
LR-20-32-10-A	20	32	10	M6	13
LR-25-38-12-A	25	40	12	M8	21
LR-30-46-15-A	30	45	15	M8	39
LR-35-50-15-A	35	50	15	M8	41
LR-40-60-20-A	40	60	20	M10	85